



FR600 Series

550Vac/690Vac Vector Control Inverter



FRECON ELECTRIC (SHENZHEN) CO.,LTD.



FR600 Series summary

FR600 Series can be customized designed for industry solutions in Metallurgy, Crane, Petro, Chemical and Mining industries.

Specifically France, Germany, Finland, South Africa and other countries developed industrial grid voltage for medium voltage drives.



Large margin derating design

- 32 bit Cortex-M3 ARM core host CPU, clocked at 144MHz.
- Infineon IGBT module 1700V voltage level.

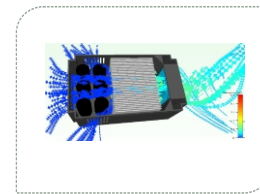


- 1000V voltage electrolytic capacitors (500V grade), 1200V voltage electrolytic capacitors (660V grade)
- 1800V voltage rectifier module (500V grade), 2400V voltage rectifier module (660V grade)



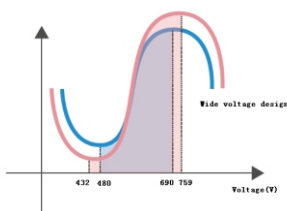
superior environmental adaptability

- Standard products using three anti-paint treatment,
- Duct isolation technology, resistant to moisture, dust, sealed design, easy to deal with harsh industrial environments.



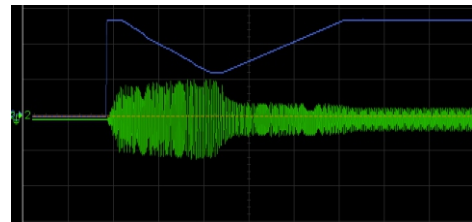
Superior Immunity design

- Wide operating voltage range, low voltage by over-modulation technology to ensure load capacity.
- On the grid surge (lightning strike), power grid noise, electrostatic immunity, to harsh industrial standards.
- Control power and bus separation; control power transformer isolated isolation separate power supply, control power standard design of the filter circuit.



Excellent performance

- ◆ High starting torque
- ◆ 180% Rated torque / 0.5Hz (SVC 1)
- ◆ 180% Rated torque / 0.25Hz (SVC 2)
- ◆ Reduce the sensitivity from SVC control to motor parameter, to improve the site adaptability



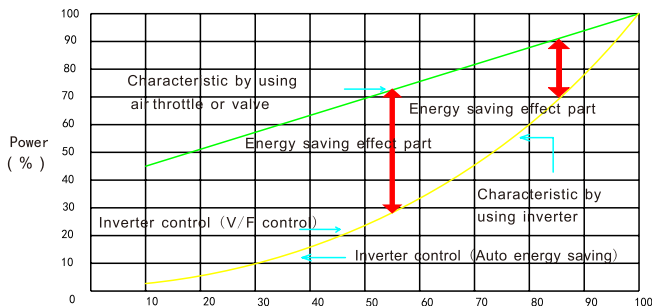
Speed tracing output frequency and current waveform

Abundant function

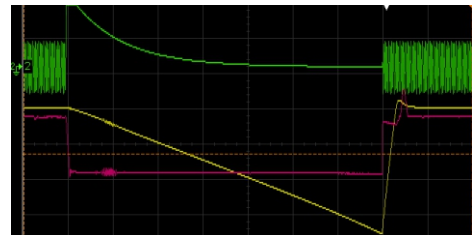
Integrated model with G&P in one

Load torque characteristic		Variable torque characteristic (P model)	Constant torque characteristic (G model)
Load characteristic			
		Fan, pump load type	Conveyor belt, trolley and other constant torque load type
		Load torque change is proportional to speed (Non need overload capacity)	Fixed Load torque (Overload capacity required)
Inverter characteristic	Overload capacity Maximum output power	120% rated current: 60S 600Hz	150% rated current: 60S 600Hz

- Equipped functions most suitable for fan and pump, equipped PID control function
- To implement temperature, pressure, flow control without extra controllers

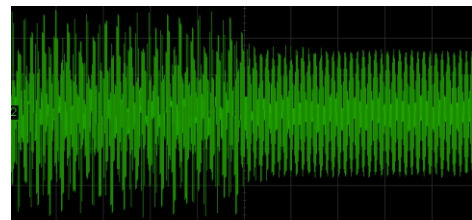


- Air flow or water flow Q(%) energy saving effect characteristic
- Different motor characteristic, different effect
- ◆ Dormant & wakeup function
Supports frequency dormant & wakeup and pressure dormant & wakeup, better adaptability for various sites
- ◆ Speed tracing function
Inverter starts motor smoothly according to motor's current running direction and speed



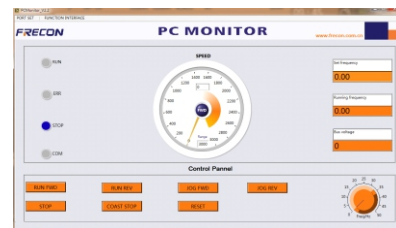
Green color is input voltage
Yellow color is output frequency
Red color is bus voltage

- ◆ Oscillation suppression function



Convenient debugging

- ◆ Powerful background software



- ◆ Short-cut menu
Common parameters setting rapidly to save customer's time to read manual
- ◆ Unique upload and download module which is convenient for parameter commissioning
Restore factory parameters, backup user parameters
- ◆ Design special application macro according to industry demand

Electric Specification

Main Power Voltage	Model No.	Motor Power (kW)	Power capacity (kVA)	Input Current (A)	Output Current (A)	Dimension (W*H*D) (mm)
Three Phase 550VAC	FR600- 5T- 4.0-H	4	7.5	8	7.6	198*300*195
	FR600- 5T- 5.5-H	5.5	12	12	11	
	FR600- 5T- 7.5-H	7.5	15	16	14.5	
	FR600- 5T- 011-H	11	20	21	20	
	FR600- 5T- 015-H	15	28	30	28	
	FR600- 5T- 018-H	18.5	35	37	35	
	FR600- 5T- 022-H	22	40	42	40	270*545*270
	FR600- 5T- 030-H	30	52	55	52	355*620*290
	FR600- 5T- 037-H	37	64	68	65	
	FR600- 5T- 045-H	45	77	82	77	
	FR600- 5T- 055-H	55	97	103	98	
	FR600- 5T- 075-H	75	125	130	124	430*825*305
	FR600- 5T- 090-H	90	148	157	150	
	FR600- 5T- 110-H	110	178	189	180	
	FR600- 5T- 132-H	132	217	231	220	
	FR600- 5T- 160-H	160	257	273	260	660*1030*369
	FR600- 5T- 185-H	185	297	315	300	
	FR600- 5T- 200-H	200	326	346	330	
	FR600- 5T- 220-H	220	356	378	360	
	FR600- 5T- 250-H	250	410	435	414	
FR600- 5T- 280-H	280	452	480	458	810*1167*460	
FR600- 5T- 315-H	315	505	535	510		
FR600- 5T- 355-H	355	565	600	573		
FR600- 5T- 400-H	400	632	670	646		



690VAC	FR600-6T-018-H	18.5	35	30.0	25	270*545*270
	FR600-6T-022-H	22	37	35.0	28	
	FR600-6T-030-H	30	43	40.0	35	
	FR600-6T-037-H	37	51	47.0	45	
	FR600-6T-045-H	45	65	52.0	52	357*620*290
	FR600-6T-055-H	55	80	67.0	65	
	FR600-6T-075-H	75	93	82.0	86	
	FR600-6T-090-H	90	123	96.0	98	
	FR600-6T-110-H	110	147	120.0	124	430*825*305
	FR600-6T-132-H	132	166	145.0	150	
	FR600-6T-160-H	160	229	175.0	180	
	FR600-6T-185-H	185	236	190.0	200	
	FR600-6T-200-H	200	258	210.0	220	
	FR600-6T-220-H	220	286	235.0	245	
	FR600-6T-250-H	250	316	255.0	270	660*1030*369
	FR600-6T-280-H	280	346	290.0	300	
	FR600-6T-315-H	315	367	335.0	350	
	FR600-6T-355-H	355	454	370.0	390	
	FR600-6T-400-H	400	488	415.0	430	
	FR600-6T-450-H	450	559	460	480	
FR600-6T-500-H	500	645	520	540	810*1167*460	
FR600-6T-560-H	560	660	580	600		
FR600-6T-630-H	630	812	655	680		

Technical Parameters

Main Power	Input Voltage Uin	Three Phase 690VAC (-30% ,+10%)	Three Phase 550VAC (-30% ,+10%)
	Input Frequency	50/60Hz	
Motor Connections	Output Voltage	0VAC ~ Uin	
	Output Frequency	0Hz ~ 600Hz	
	Frequency Resolution	0.01Hz	
	Overload Capacity	150% 1 min, 180% 10s, 200% 1s	
Control Characteristic	Control Mode	V/F Control, No PG Vector Control 1, No PG Vector Control 2, With PG Vector Control	
	Carrier Frequency	0.7kHz ~ 16kHz	
	Acce Time	0.1s ~ 6000.0s	
	Dece Time	0.1s ~ 6000.0s	
	Torque Boost	Auto torque boost, manually torque boost 0.1 ~ 30.0%	
	DC Brake	DC Brake Frequency: 0 ~ Max Frequency; Brake Time: 0.0 ~ 10.0s; Brake Action Current Value: 0.0 ~ 150.0%	

INNOVATION • DEDICATED • SERVICE • WIN-WIN



FRECON

FRECON ELECTRIC (SHENZHEN) CO.,LTD

Add : 2nd, No.3 Zhenbao Industrial Zone, No.137 Shiyan
Road, Shiyan Street, Bao'an, Shenzhen, China

Tel : 0755- 88605930

Fax : 0755- 88606072

E-Mail: overseas@frecon.com.cn

Web: www.frecon.com.cn



Website



FaceBook

202308(V2.1)